



Atlantic Division Express

Where the TCA Began



OUR AIM: TO PROVIDE INFORMATION, INSPIRE PARTICIPATION & CONNECT WITH MEMBERS

Summer 2021

We're ready to run!

Join us on Sep. 26, as we resume our normal show schedule.



President's Message

It appears that Covid Safety Procedures are starting to loosen up. We received some good news recently from Penns Landing Caterers at the Sheet Metal Workers Hall that our Train Show, scheduled for September 26th, should be safe to have without adhering to any special restrictions.

We have started gearing up for it. We are looking forward to getting back to buying trains and seeing our friends and members. Meet Notices are enclosed in this mailing.

In the meantime, the Atlantic Division Board of Directors has continued to meet by telephone conference to keep things running and planning for the resumption of our show schedule. We are

IN THIS ISSUE

- President's Message
- NTTM News
- Election Results
- Train Shows Schedule
- Division's September Train Show
- November's Annual Event Choices
- Joe Lehman and his collection of cabooses
- Article on Edwin P. Alexander and connection with Division
- Examples of Member's craftsmanship on their layouts.
- 'Where there is a will, there's a way' - A crawl-space layout
- For Sale—GarGraves O Track
- Wanted—Penn Line Trains

Continued from page 1

also planning on getting started with a new Fund Raiser Car. Once the details are worked out, we will announce the design and it's availability. Atlantic Division paid members will be notified first.

There is talk that there may be a Greenberg Show at Oaks, PA in August. If it takes place and they have room for us, we will display the AD Operating Layout there to represent the TCA.

Log into the AD Website to keep up to date of our activities and events.

We hope to see everyone soon.

Bob Lubonski, Atlantic Division President

News from National Toy Train Museum

The National Toy Train Museum at the TCA Headquarters is now open seven days a week until Labor Day. We have made more improvements over the winter even as we were dealing with Covid restrictions. A few collections were donated to us this past year that we will be putting selected pieces on display in the future. Some items will be sold at deaccession. If you have never been there, you are missing a great experience. TCA members have free admission, and it is only about an hour ride out of Philadelphia.

Are you going to York in October? If so, stop in the Yellow Hall and visit the TCA booth. This year we will not be having our Open House and Tent sales at the museum the Wednesday before York. Since Mike's Train House has shut down, there are not enough manufacturers to give presentations, although the museum will be open. We will have all our deaccession items for sale in our booth from Tuesday through Saturday. Come see us and pick up some bargains.

We always have a need for volunteers to join the Museum Committee to help us maintain the museum. The entire place is maintained by our committee--the displays while we are open and constructing new displays and upgrading existing ones while we are closed for the winter. If you have some time and want to help let me know.

Bob Lubonski, Museum Committee Chairman

2021 Division Election Results

Elected for a two year term beginning July 1, 2021

Officers: Secretary-Paul Fenn, TCA # 83-19449. Treasurer-Mike Ransey, TCA # 90-32297

Directors: Al Tuttle, TCA # 99-49607, Ed Kapuscinski, TCA# HR 74-7156
Steve Stevens, TCA# 03-55460, Hank Worrell, TCA# 94-39652

2021 Summer-Fall Shows Schedule—* TCA Buy/Sell Rules Applicable

<u>DATE</u>	<u>SHOW</u>	<u>LOCATION</u>
Jul. 17, 2021	Renninger's Model Train Meet	Renningers Flea Market, 740 Noble St., Kutztown, PA 19530
Aug. 14-15, 2021	Greenberg's Train & Toy Show	New Jersey EXPO Center, Summet Ave., Edison, NJ 08837
Aug. 18-22, 2021	TCA National	Burbank Marriott Airport Hotel, Burbank, CA
Aug. 21-22, 2021	Greenberg's Train & Toy Show	Greater Phila. EXPO Center, Oaks, PA 19456
Aug. 28, 2021	Renninger's Model Train Meet	Renningers Flea Market, 740 Noble St., Kutztown, PA 19530
Sept. 12, 2021	Hamburg Dutch Train Show	Hamburg Fire Co. Field House, Pine St., Hamburg, PA 19526
Sept. 26, 2021	*Atlantic Div. Train Show	Sheet Metal Workers Hall, 1301 S. Columbus Blvd., Phila. PA 10147
Oct. 2-3, 2021	Great Scale Model Train Show	MD State Fairgrounds, 2200 York Rd., Timonium, MD 21093
Oct. 10, 2021	Wayne Train Show	Wayne P.A.L. Hall, Wayne, NJ 07470
Oct. 21-23, 2021	*Eastern Division-York	York Fairgrounds, 334 Carlisle Ave., York, PA

Have some spare time/want to help? Our Traveling Layout will be shown at the Oak's Greenberg show in August and your are invited to help with its setup (Friday) and daily operation (Sat. & Sun.) Contact Mike Ramsey for details—610-324-9770

Division's September Train Show:

- Meet notices will go out in August.
- Anyone wanting tables can start now to make their reservations.
- This year's November Annual Event info. Both with Lionel Legacy Control System

Winner's choice of either:

Lionel Penn Y3,
6-11447, O ga.

or

Amer.Flyer Penn
Central U33, Cat.#
6-48193, S ga.



Sad news to report that Joe Lehman (69-2553), a gentleman and Honor Roll member, passed away on April 15, 2021.

Ed. This article appeared in the Summer 2011 issue of the Express.

HOW MANY CABOOSES DO I HAVE?

By Joe Lehman

I moved to the Chicago area in 1966. My wife and I attended local auctions and I bought trains when I could afford them. In 1969 Bill Sanchez, Park Ridge, Ill, told me about the TCA, I joined. My TCA# is 69-2553. I collected anything and everything I could afford.

In 1973 I moved back to the Philadelphia area and really got sticker shock. Prices here in the East were really high compared to the corn fields of Illinois. My first visit to York was really shocking. Couldn't afford much at all. Then I remembered a visit I had to Eric Buckley's home in Lititz, Pa in 1969. Lou Redman was there that night. Wonderful collection. One wall was covered with cabooses. Unbelievable. The collection really caught my eye. My next visit to York allowed me to buy several cabooses for a small amount of money. Atlantic Division meets gave me the opportunity to buy lots of inexpensive cabooses. A.D. members were curious about my strange building collection and they started to point out cabooses I did not have. The collection started to get a life of its own.

Today my caboose collection is probably the "WORLD'S LARGEST CABOOSE COLLECTION". Some facts about the collection. It consists of:

11 DIFFERENT BING CABOOSES
13 DIFFERENT AMT CABOOSES

16 DIFFERENT GLASS CABOOSES
20 DIFFERENT HAFNER CABOOSES
26 DIFFERENT IVES CABOOSES
27 DIFFERENT FACTORY ERROR CABOOSES
29 DIFFERENT ATLAS CABOOSES
34 DIFFERENT KUSAN CABOOSES
34 DIFFERENT CAST IRON CABOOSES
51 DIFFERENT WOOD CABOOSES
60 DIFFERENT PORT HOLE CABOOSES
72 DIFFERENT MTH CABOOSES
80 DIFFERENT EXTENDED VISION CABOOSES
98 DIFFERENT CLUB CABOOSES
112 DIFFERENT WORK CABOOSES
125 DIFFERENT BAY WINDOW CABOOSES
128 DIFFERENT AMERICAN FLYER CABOOSES:
171 DIFFERENT HO CABOOSES
168 DIFFERENT CABOOSE KITS
176 DIFFERENT K-LINE CABOOSES
235 DIFFERENT MARX CABOOSES
356 DIFFERENT CABOOSE MANUFACTURERS
727 DIFFERENT LIONEL CABOOSES
2182 TOTAL NUMBER OF DIFFERENT CABOOSES

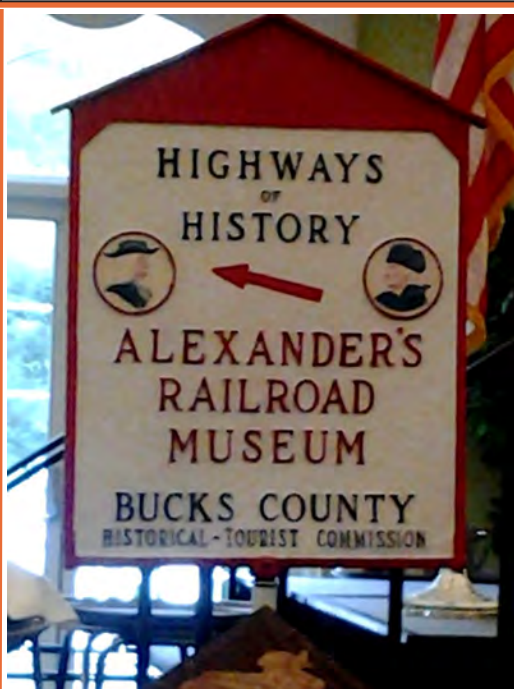


TCA Mission Statement—"...to promote the growth and enjoyment of collecting and operating toy, model and scale trains."

Ed: This issue is devoted to the members who create the scenery that accompanies their operating collections—the 'scratch builders'. On the next pages are pictures of a few members' creative work that decorates their layouts in a variety of ways. Our region was home to a TCA founding member who was such a craftsman. In the 'History of the Atlantic Division', found on the adtc.com website in the "About Us" tab, the origin of the TCA is traced to a group of collectors who were known as the "Monday Nighters". One of the original member was Edwin P. Alexander, (1905 - 1981) who founded the American Model Railroad Company (New Rochelle, NY) in 1927 and was known for his expertise in model building. A complete review of his accomplishments are presented in an article published by the TCA Western Division, see <http://www.tcawestern.org/alexander.htm> . An excerpt is presented below.

"In 1941 Ed Alexander moved from New Rochelle, New York to Yardley, PA. There he spent time working as a photographer for the Pennsylvania RR Engineering Dept. through the war years. He also built industrial models of the Broadway Limited for the PRR, and a 20th Century Limited for the NYC. He also modeled a 1" scale vista dome streamline car for the Burlington RR and several others were made in 1/2" scale for the Budd Company. Later in the 40's Ed founded the Alexander Railroad Museum which featured the Penn Eastern 1 1/2" outdoor railroad. The museum was really a 200 year old barn on his property that housed Ed's extensive scale train collection. When the New York World's Fair closed, the 'O' scale equipment was sold off through Macy's Department Store. Ed was able to re-acquire some of the now historical pieces, which he had made, and they formed an important part of this collection. Other tinsplate trains and various railroadiana items found their way into the museum over time.

This issue contains an article about Mr. Alexander that appeared in 'The Model Craftsman' (circa 1930s) and examples of our members' and others' craftsmanship in scratch-building features/scenes on their layouts that enhance the running of their collections.



Original restored sign presented to TCA by the 2014 Atlantic Division National Convention Committee, June 25, 2014.

Picture from 2018 of a display at the National Toy Train Museum



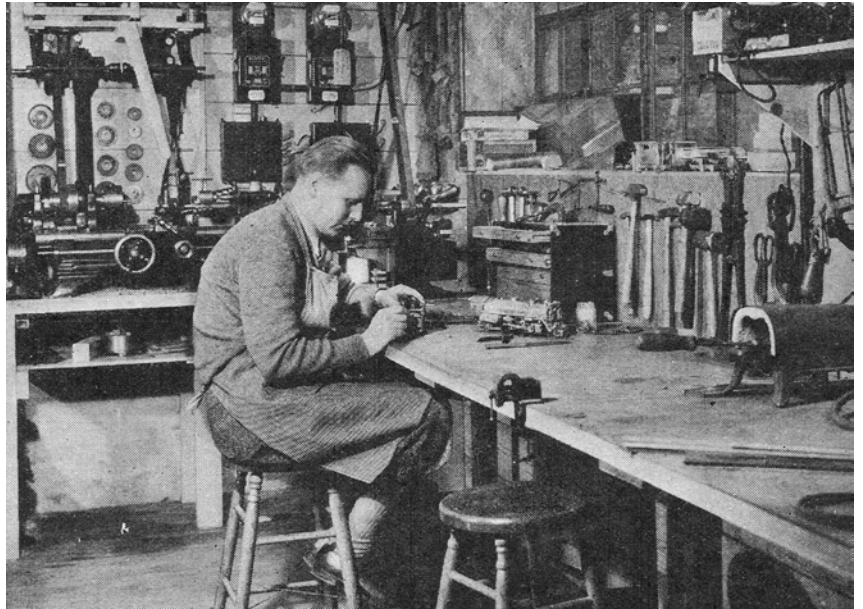
Famous Model Builders

MODEL CRAFTSMAN believes that its readers would like to know how some of the well-known model builders became interested in model making and something of their working methods. This is the first of a series of articles on this subject. Mr. E. P. Alexander, who is one of the pioneers in model building in America, is our first subject.

BACK in 1922 Mr. Alexander was a member of a well known amateur radio club. In the course of experimentation, it was decided to build a model railroad for practical demonstration work.

Mr. Alexander became so engrossed in building this model that the work was left almost entirely to him, and it proved to be such a fine specimen of workmanship that it received notice in various prominent Eastern newspapers. This brought correspondence from others model making from all country.

At that time it was necessary for craftsmen to rely upon their own ability to produce every part of the railroad project that they were building. Some of these who were in-



were building. Some of these who were interested were not sufficiently skilled to produce some of the intricate parts, and Mr. Alexander was called upon for assistance.

In this way he has gradually built up a business that is worldwide. He is now one of the largest producers of model railroad equipment and was chosen by two of the leading railroad companies to build their working models at the "Century of Progress" Exposition at Chicago.

His shop is a model of efficiency and modern equipment. All products manufactured by him travel from the drafting room to the shipping department in a complete square. On one side of the large factory room is the planning and engineering department. To the left is a battery of modern machines where all machining is done. Then comes the assembling, and following that comes the finishing and final adjustments. In the center of the room is a large space where testing and packing is done. From here the final operation is shipping. Mr. Alexander himself supervises all of the work and he has six skilled workmen as his constant assistants.

On a floor above the workshop there is a complete railroad system which includes every product made by his company. Here is the experimental laboratory. Every part is tested for strength, durability and practicability. In this model railroad system, most of the improvements in his line are accomplished. Some of the first models he built are still in operation here.

In addition to being recognized by some of the largest engineering companies for his skill as a model maker, Mr. Alexander has received high awards from the New York Society of Model Engineers. He holds six medals and one cup presented by this Society.

He also has one of the most complete libraries of pictures and books on all types of models to be found in this country.

Hats off to E. P. Alexander.

Next month you will hear about another leader in the model building field.



Bill Erskine's Refinery, Dance Hall and Lafayette Hotel.
Mike Hudek's baseball game



Peter Perry's grave yard



Russ Keil's New York City Subway

Crawl Space Layout-Are you kidding me!

WHERE THERE IS A WILL, THERE IS A WAY

Mike Hudek, 90-32044

Several years ago, I met a local train collector, Duke, who told me he built his layout in a crawl space. For those who do not know a crawl space is a limited height space under a house to leave access for pipes, wires, and duct work. He described months of crawling on his hands and knees building a plywood base on 4x4 lumber, making mountains, tunnels, laying track, wiring, and building scenery. I thought to myself what kind of layout can you build in a crawl space? I continued to see Duke at local train events and shows and we talked about his layout. Finally, I said I need to see this layout in a crawl space.



Several weeks ago I visited the layout and was blown away. The level of detail would be impressive on any layout but, considering Duke crawled on his belly most of the time I do not know how he did it. He hand-placed 100s of people, cars, trees, and roads.

The overall space is large, about 25 feet across by 15 feet deep. The challenge is it is only 36



inches high. I hope you will be as impressed I was. Duke built the layout about 15 years ago when he had better mobility. Today the layout only runs on special occasions as Duke can no longer access the far reaches of the layout. Duke is planning a new layout in a pole barn he is building in his backyard. Duke is proof if you want something bad enough you will find a way.

(continued on page 8)



Wanted / For Sale / For Trade Advertising (next issue deadline—August 31, 2021)

WANTED — Bob Robinson, : Contact at carolsfancy@gmail.com
Penn Line Trains from parts to perfect, Alexander structures, Kits

FOR SALE — John Halajko, 84-20653: Contact at 609-372-7848, or jshalajko@comcast.net
C7/C8 GarGraves O72 , \$80/circle
C7/C8 GarGraves O108 Circle of Track, \$100/circle
C7/C8 GarGraves O-Gauge Straight Sections, \$3/section

Send your listing to Bob Wittendorf (see below) for inclusion in the next issue by August 31, 2021. This is available to only AD members.

Editor: Bob Wittendorf, PO Box 5021, Royersford, PA 19468-0921, Email to rwitten14@gmail.com, Phone (c) 484-478-2470

Contributors:

Show Schedule: Win Becker, williamhbeckerinc@gmail.com

News/Articles/Stories: Bill Erskine, John Halajko, Mike Hudek, Bob Lubonski, Mike Ramsey, Terry Trickle