



Atlantic Division Local



SPRING 2003

EDITOR'S NOTES

The Spring issue of the Newsletter is always difficult to prepare. There is usually little to discuss. The November Meet was covered in the last issue and the January Meet is yet to come. Nevertheless I was able to find a few items of interest.

One of the items normally described at this time is news of our Holiday Display. Unfortunately, for the first time in I don't know how many years, this year we did not have one. The airport was not very cooperative. They were talking about expanding the "Secure Zone" to include the areas we normally occupy. This did not happen; but they were so late in making up their minds that Ed decided to pull the plug.

We don't believe that airport administration is entirely to blame. They are working hard to comply with ever changing Federal Security regulations. Because of this bureaucracy, it might be better for us to seek another venue for our exhibit. I am certain that this will come up for discussion during the coming year. If anyone out there has any ideas please let us know.

One thing that has been finalized is the location for all of our meets for 2003. Bob Lubonski informs us that they will be held at the Plumbers' Hall that is located at 2980 Southampton Rd. in Philadelphia, a short distance from our former hall. The dates are: Jan 12th, March 23rd, Sep 21st and Nov 23rd.

We are happy to note that over the past several months we have been receiving material for publication from a number of our readers. This a good sign since it indicates that our Newsletter is a forum for discussing trains. To ensure that your material is published in a timely manner, the following are the deadlines for submitting materials: March 30th, June 30th and October 30th.

Chester Zmijewski

PRESIDENT'S MESSAGE

2002 ended on a positive note for the Atlantic Division. Over 300 members, guests and public patrons attended our November train meet. Table holders were pleased with their sales. Most importantly, there was a spirit of fellowship among all who attended.

Edward Dattner is our new Registration Chairman. The Board of Directors at its January meeting approved his appointment. As Registration Chairman, Ed will be part of the Meet Steering Committee. The position of Registration Chairman is a challenging one and we welcome Ed to his new responsibilities and wish him a "Clear Track Ahead".

A Fishy Story: At our September Member's Meet, the Division presented Richard Heineman, our retiring Secretary, with a Penn fishing reel. Using our gift, Dick hooked onto a 36 inch, 24 pound Striped Bass. Note that the dimensions presented here were offered by the same Dick Heineman and are subject to the enhancement of a fisherman. Therefore they should be accepted with good humor and a grain of salt. When last seen, the fish with Dick in tow was 25 miles off the Jersey coast. We look forward to seeing Dick again when he returns from his ocean voyage.

Malcolm Kates

TRAVELING LAYOUT

At the present time, we do not have sufficient volunteer members to take our Traveling layout to the various Children's facilities and Nursing Homes we have in the past. The Traveling layout has been an important part of the outreach activities of the Atlantic Division since the 1970's. It is even more important to get it on the road now; during the national campaign to make the public aware of the great hobby of Model Railroading.

If you would like to participate in this rewarding activity, please call Malcolm Kates at 215-923-5773.

HOUSES, HOUSES & MORE HOUSES

Charlie Weber, the acquirer of the unusual, obtained this group of very interesting houses. As you can see from the photos, they are quite handsome. He knows nothing about them and hopes that one of our readers might have some information. According to the label inside they were made by the LEROY NOVELTY Co. of North Wales, PA



Photo 1. End view of a very fancy house showing the lovely scroll on the chimney. Charlie's fingers are included to show relative size.



Photo 2. Front entrance view of the same house shown in Photo 1. Details such as the lamps by the front door and the shrubbery at the corners are



Photo 3. This is the barn that came with the set. It has many details beautifully painted.

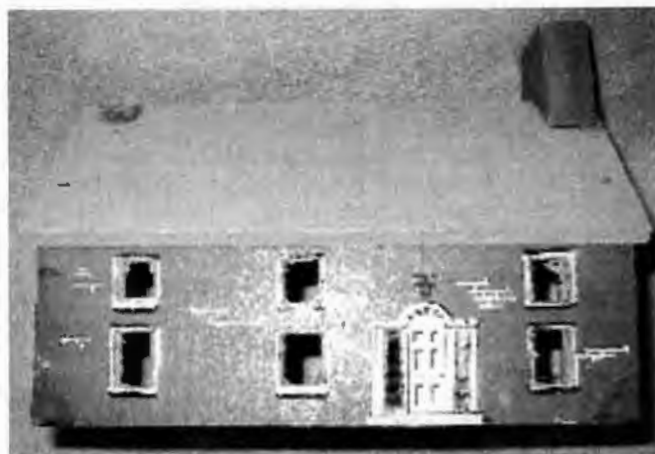


Photo 4. This is another house in the series. It is painted brick red and a few mortar lines are painted in to represent that, "Worn and weathered look".



Photo 5. This shows the rubber stamped

Compare... and You'll Demand
LEROY Model Buildings!



Modern factory building, shown above, is 6½" x 17½" x 3½" high. Priced at \$2.50. Other buildings from 50¢ up.

LeRoy model buildings are accurate and authentic. Easy to build. Can be assembled in as little as 30 seconds! All parts architecturally correct, and beautifully decorated. Clean cut edges. LeRoy buildings are easily disassembled and stored. Made of heavyweight cardboard, these rugged beauties by LeRoy will stand heavy usage.

Add to your pleasure with the many LeRoy accessories that add sparkle to your village, including: lawn roll, cork road and sidewalk, hedge and many other fascinating miniatures. All designed for easy handling and realistic appearance. Demand LeRoy for a better, longer-lasting layout!

America's Favorite Scenic Line

LEROY TOY & NOVELTY CO. 2135 Margaret Street
 Philadelphia 24, Penna.

Photo 6. An advertisement for the Leroy Toy & Novelty Co. as it appeared in the April 1952 issue of Hobby Railroading, Published by Louis H. Hertz. Note the price of the building!!!



Wind-up Roundhouse

Thanks to Stephen Clarke and Bill McKay for their replies in the Winter issue of the Atlantic Division Local. Also, thanks to Dick Claus and Murray Wilson for their e-mail replies.

A few years ago, I obtained a wind-up motor assembly marked, "English Marx". It has the die cast wheels instead of the pressed steel wheels so I would place its manufacture sometime in the 1950's or later. It has the sparking wheel and other general characteristics of Marx construction; but there are some differences as well.

Instead of having the 1/8" X 1/8" hole for the winding key a 1/8" X 1/8" shaft extends from each side so that a key with a 1/8" socket would have to be used. Mounted on the cross bar that holds the drivers in place at the front of the assembly, there are five 1/32" thick pieces of sheet steel 1 3/4" wide by 2 3/4" high with a semicircular top. It looks like a little tombstone mounted on the front of the motor. Were these for added weight to increase traction? The locomotive may have had a very light sheet metal or plastic boiler and cab. Can anyone tell us what the complete locomotive looks like?

I am sure that most of you wind-up collectors have come across some oddity. Let's hear from you. Someone else may have the answer.

Henry M. Hermanns

"Ditties" from Howard Klumpp

Why even bother with Marriage?
 Just find a woman who drives
 You nuts
 And buy her a house.

People like you
 Are the reason
 People like me
 Need medication.

If a man speaks in
 The middle of the forest
 And there is no woman
 Around to hear him
 Is he still wrong?

At my age "Getting Lucky"
 Is finding my car
 In the parking lot.

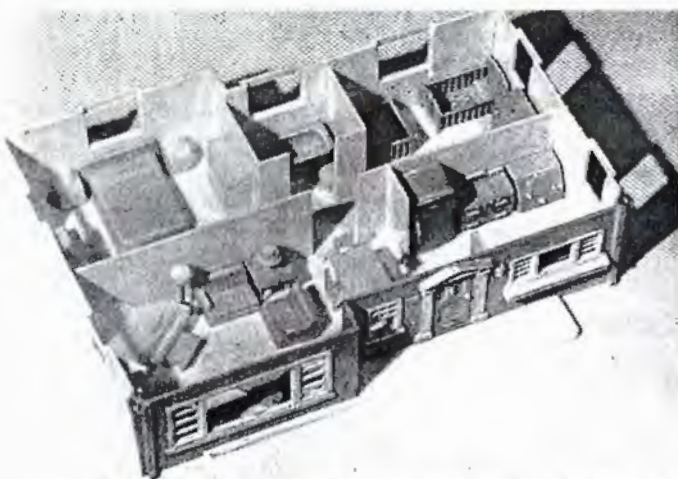
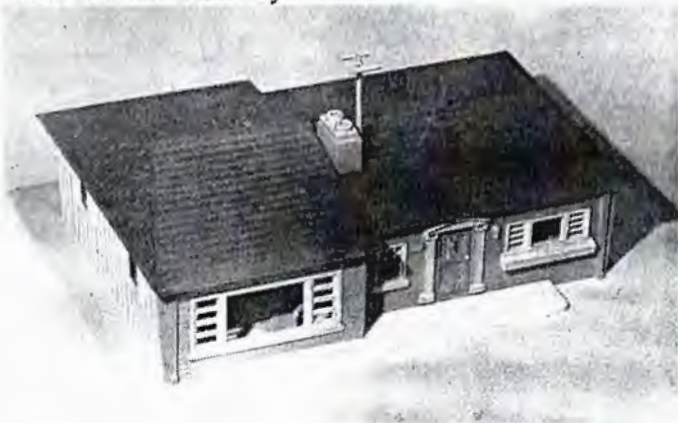
Due to budget cuts
 The light at the end of the tunnel
 Has been turned off.

A SCARCE? HOUSE
 By Charlie Weber

While perusing the "Whistle Stop" magazine for October 1951, I came upon the following review article. I wonder if any of our readers has one of these in their collection or on their layout. Also does

anyone know if the firm made other "stuff" for toy train layouts. (Note that the firm is "Amboid" not "Ambroid" – the glue people. *Eds. note even the author is muddled, spelling it Amloid in one place and Amboid in the other*)

"As I (A.G.McDuffie) have mentioned previously, plastics seem to be the order of the day in railroad accessories and scenic items. Having covered most of the plastic lines in previous issues, I accidentally ran into a new addition that is both different and certainly a novelty. This is a molded modern house put out by the **Amloid Company, 5th Street Rochelle Park, N.J.**, and while it is listed as a "doll House", don't let that throw you, for it is a most realistic home, designed with as much care as the other structures on the market and ideal for use with either Lionel or Marx or American Flyer trains.



As you will have noticed from the illustrations, this house is unique because it is also finished on the inside! This is due to the fact that it was primarily designed as a "doll house". As can be seen in the photo of the interior with roof removed, this home has a living-dining room, kitchen, bedroom bath and nursery. Also, it comes complete with the furniture shown. As the interior walls dividing the various rooms do not extend above the height of the

outside walls, this permits the installation of electric lighting inside the roof. While one central light would do the job, I would recommend that the dimmest bulbs be used (try painting over the globes) and only one or two rooms illuminated for realism. You have no idea how realistic this house looks with the living room lit up and the furniture showing through the large windows.

Before going any further into the description of this home. I might as well calm your fears of this unit being in the "luxury" brackets in regard to price. It retails for the low sum of **\$1.98**, which is well within everybody's income and which compares well with other makes already on the market.

But back to the details. The front wall is of simulated grey stone with white trim and an offcolor door. Note such well-thought-of-details as the rain drains at each end of the house, the outside door light (dummy), the house number plaque, the mailbox in the door and even the door knocker. Such details put to shame the models already made by various firms. The rest of the building is done in ivory-white wood batten style. The inside floors and walls are also of this color. The roof is a deep maroon color and even includes a TV antenna (how modern can we get?)....The color scheme which I described above, I have seen. It is possible that other variations are made, but so far I have not received any definite word from the manufacturer concerning these items. The dimensions are as follows: length 9 1/2", width 6 3/4", and height 4".

You can't go wrong with one of these homes as it will add that touch of life and realism to your layout that so many strive for and never seem to achieve. It might even be possible that the **Amboid Company** might add to this one house with other models in future seasons if there is enough demand."

ATLANTIC DIVISION LOCAL

Barring derailments or other unforeseen obstacles to normal operations, the Atlantic Division Local is published four times a year. Anyone having material they would like published should submit it to the Editorial Office. The material need not be in polished form. We will accept Want ads and For Sale ads from individual members.

Charlie Weber & Chester Zmijewski, Co-editors
Editorial Office
1119 Yardley Rd.
Cherry Hill, NJ 08034
e-mail: chesterz@bellatlantic.net